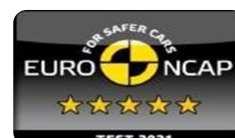


THE ALL NEW QASHQAI MILD HYBRID



SCAN ME FOR BROCHURE



Apr-23

Engine	Performance	Consumption-Emissions	Weight & Dimensions	
Eng. Capacity: 1332cc	Top Speed: 205 km/h	Urban: 6.4l/100km	Boot Capacity: 504L	Length: 4,425mm
Power: 158 bhp	Acceleration: 9.5 sec	Ex.Urban: 4.9l/100km	with Folded Seats:1,593L	Width: 1,835mm
Torque: 270Nm 1800-3750rpm		Combined: 5.5l/100km	Kerb Weight 1315 Kg	Height: 1,625mm
		CO2: 125-140 g/km		Wheelbase: 2,665mm

ACENTA- COMFORT package

€ 29,900

LED Headlamps (Low/High Beams)	AIVI NAVI 12.3" with 6-speakers	Auto Headlights with High beam assist
LED Day Time Running Lights	Apple Carplay (wired only)	Traffic sign recognition
LED Rear lamp (brake & night time)	Android Auto (wired only)	Steering with paddle shift
Around View Monitor	7" colour TFT Combimeter	Rain sensing wipers
Intelligent Cruise Control	i-Key (Engine start button & easy access)	Rear Automatic Braking
Drive modes	2 Curtain airbags + 2 Side Airbag (FR) + 2 FR airbags + 1 FR far side airbag	Intelligent Front Emergency Braking with Pedestrian, Cyclist & Junction assist
17" Alloy wheels	Bluetooth (phone and audio)	Dual auto air conditioning
Hill start assist & auto hold	Elect. Adjust, Fold and Heated outside mirrors	Vehicle Dynamic Controls
Tire Pressure Monitoring System	Smooth leather steering wheel & shift knob	Fog Lights
Rear Cross Traffic Alert	Anti-Theft alarm	Blind Spot
Rear parking sensors	Driver Attention Alert	Intelligent Forward Collision Warning
Electronic parking Brake	Around View Monitor	60/40 rear seats, Isofix

N-CONNECTA- DYNAMIC package (on top of COMFORT)

€ 31,900

18" Alloy wheels	AIVI NAVI 12.3" with Connected Services	Rear bumper with silver insert
Privacy glass	Wireless charger	Digital Speedometer Display
Front parking sensors	Around View Monitor with Moving Object Detection	Glass Roof and Roof Rails

TEKNA- PREMIUM package (on top of DYNAMIC)

€ 34,900

LED Adaptive Driving Beam	Ambient lighting: front doors & centre console	Power tailgate with hands-free function
Front & Rear LED turning signals	Dark Part Syntech Leather & Cloth for seats	Rear reverse light LED
Head Up Display	Driver seat: 8-way electric with slide/recline/lifter/tilt	2-way electric Lumbar

TEKNA+ - LUXURY package (on top of PREMIUM)

€ 35,900

Nappa Quilted Leather seats	Adv.i-Key memory : driver seat & exterior mirrors	Tilting mirrors reverse
Heated front seats	Driver seat: +4-way electric lumbar	BOSE sound system 10 speakers
Heated steering wheel	Assist seat: Electric seat + 4-way electric lumbar	Front massage seats (3 massage modes)

Metallic Paint €600

2 tone color (except Comfort) €500

4WD (except Comfort) €1000

Prices and Equipment subject to change without notice, (* 3 years or 100.000km on all parts and additional 4 years or 150.000km for engine and gearbox)

NICOSIA: 66 Kampou Str. 2030, Tel: 77777220

LIMASSOL: 19 Theophanous Kritos Str. 4152, Tel: 22418630

LARNACA: 2 Argolidos Str. 7101, Tel: 22418600

PAPHOS: 67 Mesogis 8280 Tel: 22586560