



TOYOTA YARIS CROSS



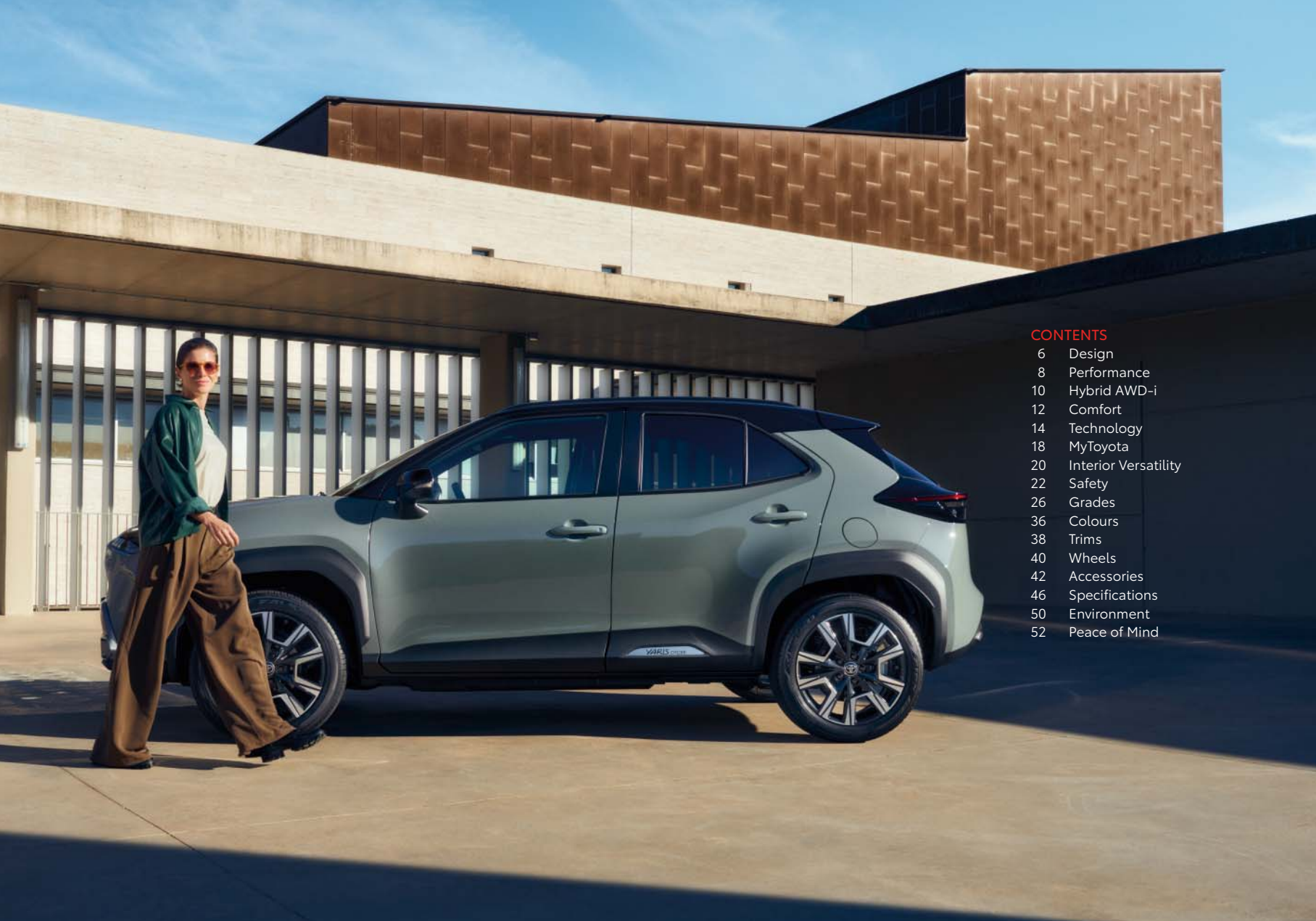


**Welcome to a world where every step counts.**

When our founder Kiichiro Toyoda ran to assist customers himself, he set in motion an exhilarating story. Of revolutionising car production. Of pioneering electrified powertrains. Of making mobility accessible to all. Of never resting. Of always going beyond expectations to make life better for our customers. And in doing so, to create a better world.

L E T ' S G O B E Y O N D





#### CONTENTS

6	Design
8	Performance
10	Hybrid AWD-i
12	Comfort
14	Technology
18	MyToyota
20	Interior Versatility
22	Safety
26	Grades
36	Colours
38	Trims
40	Wheels
42	Accessories
46	Specifications
50	Environment
52	Peace of Mind



# EVERY CAN DO COUNTS

The compact crossover with big ambitions, Yaris Cross reimagines the attitude and commanding views of an SUV on a city-friendly scale. With bold exterior design, this nimble performer is spacious and versatile on the inside. Driven by advanced Hybrid engines and unstoppable all-wheel drive, enjoy the confidence to go wherever life takes you.



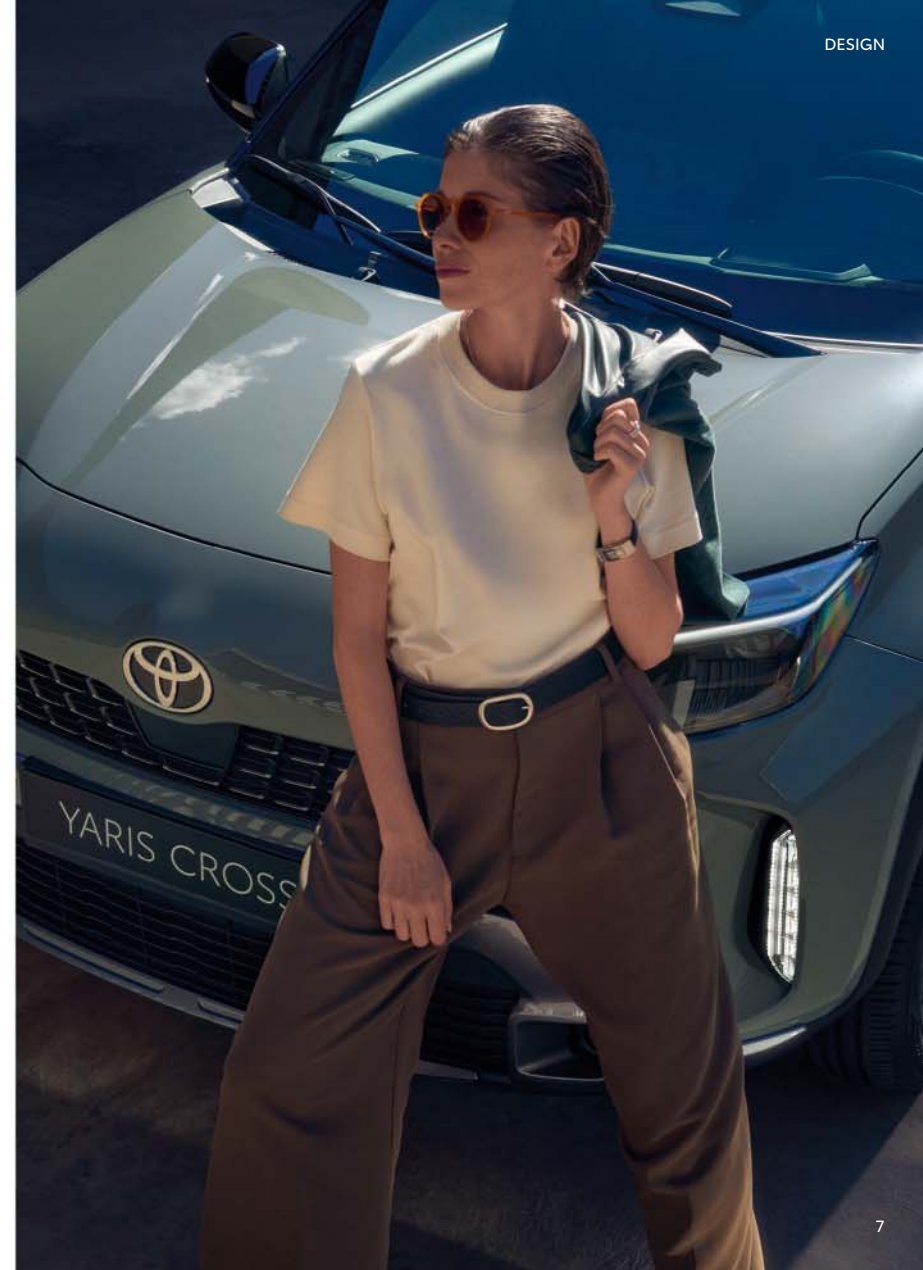


# STAR IN EVERY SCENE

Purposefully proportioned, with a strong, sculptural design, Yaris Cross doesn't go unnoticed. New Premiere Edition takes things to the next level, combining a high-impact Urban Khaki bi-tone with exclusive 18" alloy wheels. Created to be easier, smarter and faster in the city, Yaris Cross was born for life on busy urban streets. With compact dimensions and increased ground clearance, it's a breeze to drive, anytime, anywhere.

## MAKE A STATEMENT

Progressively styled, Yaris Cross has a distinctive, confident design language. Bold, defined feature lines and clean surfaces create an unmistakably premium feel.





**HYBRID 115**Power **116 DIN hp**Fuel consumption\* **4.8-5.1 l/100 km**CO<sub>2</sub> emissions\* **108-116 g/km**Acceleration **0-100 km/h 11.8 secs**Available on **Mid, Mid+****HYBRID 130**Power **130 DIN hp**Fuel consumption\* **4.8-5.2 l/100 km**CO<sub>2</sub> emissions\* **108-118 g/km**Acceleration **0-100 km/h 11.3 secs**Available on **Mid+, High, GR SPORT**

\* Combined cycle.

# BRING THE ENERGY

From cruising the urban crawl to owning the open road, Yaris Cross has the Hybrid power to do it all. Self-charging and fuel efficient, its advanced powertrains seamlessly blend petrol and electric drive. The result is responsive acceleration whenever you need it – and a smile on your face. Hybrid 115 is smooth and stress-free, for easy city driving. Hybrid 130 is a sparkling performer, perfect for active, sporty driving. Press start and let nothing hold you back.

**POWER WITHOUT COMPROMISE**

Alert and responsive, the Hybrid 130 engine brings the energy. Sporty and dynamic on city streets and the open highway, it's always an exciting drive.



# ALWAYS IN CONTROL

Because you never know what's around the corner, Yaris Cross has the all-weather security of an authentic SUV. AWD-i, all-wheel drive, with an additional electric motor on the rear axle, gives supreme grip and traction. From cornering in heavy rain to accelerating on loose surfaces, the system works unseen to keep you safe and secure. What's more, because it automatically switches between two driven wheels and four, Yaris Cross returns class-leading efficiency, particularly in the driving mode.

## ALL-WHEEL-DRIVE SECURITY

The AWD-i mode switch features Snow and Trail modes, to keep you moving when conditions get tricky. It minimises tyre slip for safe progress in all weathers.







# COOL AND COMFORTABLE

Relax into the roomy cockpit with its elevated, SUV-inspired seating position. Premium throughout, high-quality, tactile materials combine with contemporary design to create an uplifting interior full of light and space. Bringing the outside in, Urban Khaki cockpit trim and seat stitching reflect the car's purposeful character. With mood-lifting ambient lighting setting the tone day or night, this is a car for every occasion.

## VIEWS WITHOUT LIMITS

Natural light streams in through the sophisticated panoramic roof, creating a bright and airy ambience.







# ALWAYS CONNECTED

Yaris Cross is comprehensively connected. With its high-definition display and zero-lag responses, the big 10.5" multimedia touchscreen takes centre stage. Powered by Toyota Smart Connect with touch and voice control – calls, navigation and media streaming have never been easier. Yaris Cross is supremely comfortable too, with heated seats, a heated steering wheel and air conditioning with purifying nanoe™ X technology.



## ONE STEP AHEAD

Quickly locate nearby fuel or parking with Toyota Smart Connect. Featuring connected cloud navigation with live traffic events, it's always working to save you time and energy.





# CONFIDENTLY IN CONTROL

Created to help keep your eyes on the road, the digital cockpit shows key information at a glance, for stress-free driving confidence. The innovative 12.3" Combimeter puts driving data within your eyeline, minimising the adjustment your eyes must make as they switch focus from the display to the road ahead. The Head Up Display takes this idea to the next level, superimposing information such as vehicle speed on your view of the road ahead.

## THRILLING JBL® AUDIO

With its bright, balanced sound, the eight-speaker JBL® sound system ensures a rich, high-definition audio experience.







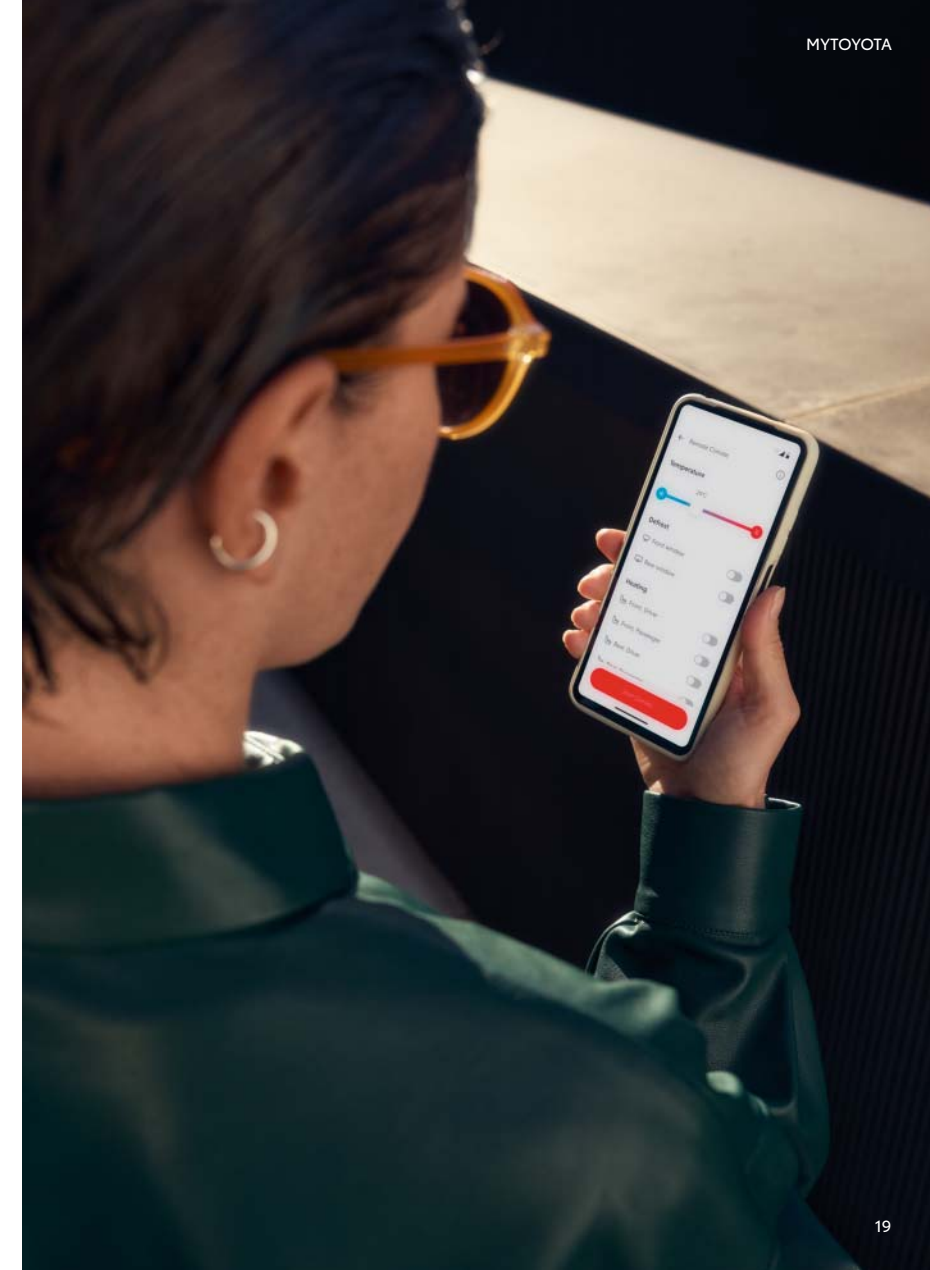
## MyToyota app IN CONTROL FROM YOUR PHONE

Connectivity doesn't stop when you leave the car. The MyToyota app is a powerful tool on the move. Secure your car from afar, locking the doors and closing the windows with Remote Control. Use Remote Start to prepare the Hybrid system and cool or warm the cabin ahead of a journey. And with Car Finder you can remotely flash the lights, sound the horn and see the car's location on a map, making it easy to find.

### MAKE YOUR PHONE THE KEY

With Smart Digital Key your smartphone becomes your car key. It works from your bag or pocket to unlock and start your Yaris Cross hands-free and securely.

\* Smart Digital Key introduction is expected in 2024. Feature availability and vehicle specification may vary among models, grades and according to market availability.







# A SPACE WITHOUT LIMITS

With the space to pursue your passions, Yaris Cross has all the answers. Clever packaging maximises interior space and practicality, with a roomy cabin and plenty of luggage capacity. Yaris Cross is convenient too, with a twin-level 60:40 split cargo deck board and a kick-activated power back door, for hands-free access. Fold all the rear seats for 1097 litres of capacity or split and fold them individually, giving you the flexibility to carry it all, from bags to bikes.

## LEAVE NOTHING BEHIND

Boot volume can be increased using the first-in-class 40:20:40 folding rear seat system. It provides additional space and adaptability – invaluable when some things are impossible to leave behind.





# Toyota T-Mate WITH YOU FOR A SAFER JOURNEY

For class-leading safety functions, Yaris Cross is built with T-Mate – your helpful driving partner. This includes the latest generation of Toyota Safety Sense T-Mate makes sure you're always in safe hands.

## PRE-COLLISION SYSTEM WITH INTERSECTION COLLISION AVOIDANCE SUPPORT

The Pre-Collision System can detect and help you avoid collisions with other vehicles, pedestrians, cyclists and motorbikes. It works by alerting the driver with audio and visual warnings and brake assistance.

## ACCELERATION SUPPRESSION AT LOW SPEED

While driving at low speed, if the accelerator is pressed hard in front of obstacles such as another car, cyclist or pedestrian, the system will restrict sharp acceleration to minimise the risk of a collision.

## PROACTIVE DRIVING ASSIST – DECELERATION ASSIST

This system supports smooth deceleration when the accelerator pedal is released, when approaching a preceding vehicle.

## PROACTIVE DRIVING ASSIST – STEERING ASSIST

This function assists the driver in preventing deviation from the driving lane. The system detects the curve ahead and adjusts the steering assist force to facilitate adequate steering. It can also support improved straight-line driving stability.

## EMERGENCY DRIVING STOP SYSTEM

If the system detects no driver input for some time, audible warnings will alert the driver. If no further inputs are detected, EDSS brings the vehicle to a gradual stop while keeping it safely in lane.



Learn more about T-Mate.



## SMART SAFETY

Pre-Collision System scans the road ahead for other vehicles, pedestrians and cyclists, warning of potential collisions before they happen and braking automatically if required.





#### SAFER FOR EVERYONE

Active when you stop, this system monitors traffic approaching from behind. If opening a door would cause an accident, Safe Exit Assist sounds an alert and flashes the side mirror indicators.

# TECHNOLOGY THAT PROTECTS

When every space in the city is yours for the taking, nothing stops you. Whether you're parallel parking outside your favourite store or reversing in a crowded supermarket parking bay, Toyota Teammate Advanced Park makes even the most challenging manoeuvres safe and convenient. With steering, acceleration and braking being operated automatically for you, the pressure of parking is a thing of the past. Added to the system's standard 360° Panoramic View Monitor, Blind Spot Monitor, Intelligent Clearance Sonar with Automatic Braking\* and Rear Cross Traffic Alert with Automatic Braking, T-Mate makes city life feel safer, even in the tightest spots.

#### SAFE EXIT ASSIST

This system uses the Blind Spot Monitor radar to help prevent a collision between an occupant's opened door and a vehicle or cyclist approaching from behind. If there is a risk of a collision, indicators illuminate on the outer mirrors and multi-information display, the interior ambient lighting will turn red together and an audible buzzer will sound to alert occupants.

#### REAR SEAT REMINDER SYSTEM

This system alerts the driver if a passenger or object is left on the rear seat when leaving the car. The alerts will include: a warning in the cockpit meter and, subject to model, after locking the car, also hazard lamp and an audible buzzer will activate.

#### REAR CROSS TRAFFIC ALERT WITH AUTOMATIC BRAKING

When you're backing out of a parking space, this system will identify any vehicles approaching from the left or right, alert you to them and apply the brakes to help to avoid a collision.

#### INTELLIGENT CLEARANCE SONAR

Intelligent by name, intelligent by nature – this system warns the driver of obstacles in front of or behind the car and automatically brakes to help to avoid collision.

#### BLIND SPOT MONITOR

Our Blind Spot Monitor system alerts the driver to any vehicles they might not have seen in their side mirrors. This is particularly useful when overtaking.

\* Automatic Braking only available with CVT transmission. For manual transmission, the system delivers an audible alert.





Sleek, uncomplicated style and all the essential technology.

#### MAIN FEATURES

- Available in all body colours except Dynamic Grey with black roof (2VF), Shimmering Silver with black roof (2VU), Juniper Blue with black roof (M20), Oxyde Bronze with black roof (2TK), Urban Khaki with black roof (M21), Platinum Pearl White with Night Sky Black roof (2PU) and Flame Red with Night Sky Black roof (2SZ)
- Black fabric (FB20)
- 16" silver alloy wheels (10-spoke)
- Dusk sensor
- Power-adjustable door mirrors
- Rain sensor
- Automatic High Beam (AHB)
- 9" multimedia display
- Toyota Touch® 3 multimedia system
- 7" screen for information display
- Emergency Driving Stop System (EDSS)
- Full-range Adaptive Cruise Control
- Lane Trace Assist (LTA)
- Pre-Collision System with Pedestrian and Cyclist Detection
- Road Sign Assist (RSA)
- 6 speakers
- Leather gear shift knob
- Automatic air conditioning
- Rear-view camera
- Front fog lamps (LED)
- Intelligent Adaptive Cruise Control (iACC)
- Digital Audio Broadcast (DAB)
- Wireless Smartphone Integration
- Coloured TFT information display

## MID







Premium design inside and out, plus the versatility for every adventure.

**MAIN FEATURES (ADDITIONAL TO MID)**

- Black fabric with grey stitching (FC20)
- 17" machined-face alloy wheels (5-double-spoke)
- Smart Entry & Start System
- 10.5" multimedia display
- Toyota Smart Connect
- Push-button start
- Privacy glass on rear windows
- AWD-i badge

# MID+







Advanced connectivity meets high-impact design.

**MAIN FEATURES (ADDITIONAL TO MID+)**

- Available in Ash Grey (1G3), Juniper Blue (8Y8), Night Sky Black (209), Oxyde Bronze (6X1), Shimmering Silver (1L0), Platinum Pearl White (089) and Flame Red (3U5) body colours
- Taupe Fabric & Synthetic Leather (EA40)
- 18" machined-face alloy wheels (15-spoke)
- Panoramic moon roof
- 12.3" screen for information display
- 40:20:40 split-folding rear seats
- Automatically retractable door mirrors
- Dual-zone automatic air conditioning

# HIGH







Inspired by Toyota's motorsport success, GR SPORT brings attitude and an undeniable energy.

#### MAIN FEATURES (ADDITIONAL TO MID+)

- Available in Dynamic Grey with black roof (2VF), Shimmering Silver with black roof (2VU), Juniper Blue with black roof (M20), Platinum Pearl White with Night Sky Black roof (2PU) and Flame Red with Night Sky Black roof (2SZ) body colours
- Black perforated Ultrasuede® seat with leatherlike bolsters and red stitching (EC20)
- 18" machined-face alloy wheels (5-double-spoke)
- 12.3" screen for information display
- GR SPORT meshed upper front grille
- GR SPORT door scuff plates
- GR SPORT leather steering wheel
- Automatically retractable door mirrors
- Dual-zone automatic air conditioning
- 40:20:40 split-folding rear seats
- GR SPORT meshed lower front grille

## GR SPORT







New Yaris Cross at its most ambitious, with head-turning style and the technology to impress.

**MAIN FEATURES (ADDITIONAL TO HIGH)**

- Available in Oxyde Bronze with black roof (2TK), Shimmering Silver with black roof (2VU), Urban Khaki with black roof (M21) and Platinum Pearl White with Night Sky Black roof (2PU) body colours
- Black with Urban Khaki accents and Synthetic Leather (EB21)
- 18" dark chrome & machined-face alloy wheels (10-spoke)
- Kick-activated boot opening
- Smart digital key
- 10" coloured Head Up Display
- JBL® premium sound system
- Matrix LED headlamps

# PREMIERE





# CONFIDENT COLOURS

With a comprehensive palette of paint colours to choose, including bold primaries, light-catching metallics and cool new Urban Khaki, anything is possible. Express your creativity.

Yaris Cross bi-tone choices

209 Night Sky Black <sup>§</sup>			202 Astral Black			
089 Platinum Pearl White*	3U5 Flame Red*	1L0 Shimmering Silver <sup>§</sup>	8Y8 Juniper Blue <sup>§</sup>	6X1 Oxyde Bronze <sup>§</sup>	1K6 Dynamic Grey <sup>§</sup>	6X3 Urban Khaki



\* Pearlescent paint.    § Metallic paint.



Yaris Cross monotone choices

209 Night Sky Black <sup>§</sup>	1L0 Shimmering Silver <sup>§</sup>	1H5 Ash Grey <sup>§</sup>	1K6 Dynamic Grey*	040 Pure White	8Y8 Juniper Blue <sup>§</sup>	089 Platinum Pearl White*	6X1 Oxyde Bronze <sup>§</sup>	3U5 Flame Red*
----------------------------------	------------------------------------	---------------------------	-------------------	----------------	-------------------------------	---------------------------	-------------------------------	----------------



# TAILORED FOR LIFE



1. Black fabric  
Standard on Mid
2. Black fabric with grey stitching  
Standard on Mid+
3. Taupe Fabric & Synthetic Leather  
Standard on High
4. Black perforated Ultrasuede® seat  
with leatherlike bolsters and red  
stitching  
Standard on GR SPORT
5. Black with Urban Khaki accents and  
Synthetic Leather  
Standard on Premiere







DYNAMIC BY DESIGN



1. 16" silver alloy wheels (10-spoke)  
Standard on Mid
2. 17" machined-face alloy wheels (5-double-spoke)  
Standard on Mid+
3. 18" machined-face alloy wheels (15-spoke)  
Standard on High
4. 18" machined-face alloy wheels (5-double-spoke)  
Standard on GR SPORT
5. 18" dark chrome & machined-face alloy wheels (10-spoke)  
Standard on Premiere

## Accessory wheels

1. 16" silver alloy wheels (5-double-spoke)  
Optional on all grades
2. 16" black alloy wheels (5-double-spoke)  
Optional on all grades
3. 17" dark grey machined-face alloy wheels (10-spoke)  
Optional on all grades
4. 17" silver alloy wheels (10-spoke)  
Optional on all grades
5. 18" black machined-face alloy wheels (5-double-spoke)  
Optional on all grades
6. 18" black machined-face alloy wheels (multi-spoke)  
Optional on all grades





# ACCESSORIES

## Boot Pack

### Boot liner

Tailored to fit the boot of your vehicle and provide protection against dirt, grime and damage, this liner features a special anti-slip surface pattern to prevent luggage moving as you drive.

### Seatback protection

The seatback protector protects the back of the seat from dirt and spills when it's folded down to load longer items.

## Styling Packs

### Black Pack

Consisting of piano black side sills and a piano black lower boot lid trim, the Black Pack is a stylish addition to any Yaris Cross.

### Chrome Pack

Add a subtle, sophisticated finish to your new Yaris Cross, with side sills and a rear lower boot trim in chrome.



## GR SPORT Pack

### Alloy wheel sticker

A red colour element to upgrade the look of your alloy wheels.

### Exterior sticker decoration

Front and rear stickers in red to emphasise your car's dynamic contours.





## Protection films

Stone chips, UV sunlight, road salt, flying bugs – your vehicle's paintwork is constantly under attack, spoiling its appearance and reducing your its value. Maintain your car's showroom-fresh appearance with Paint Protection Films. Virtually invisible when applied, they're available for the most vulnerable areas of your vehicle and provide the ultimate in long-lasting protection.

- Door Edge Protection Film
- Door Handle Protection Films
- Front Bumper Protection Film
- Hood Protection Film
- Mirror Cover Protection Film
- Roof Protection Film



## Transport Pack

### Roof box M

This streamlined storage box adds space for skis, snowboards or anything else you might want to take with you on holiday. With easy access from both sides and a key that can't be removed until all the locking points are closed, it's safe and convenient.

### Detachable towing hitch

Make full use of your vehicle's towing capacity. The towing hook can be removed when not required.

### Side step

These side steps provide easy access to roof-mounted accessories while enhancing your car's rugged appeal.



SPECIFICATIONS

ENVIRONMENTAL PERFORMANCE	Hybrid Petrol 1.5 l Hybrid 115 e-CVT 2WD	Hybrid Petrol 1.5 l Hybrid 115 e-CVT Hybrid AWD-i	Hybrid Petrol 1.5 l Hybrid 130 e-CVT Hybrid AWD-i	Hybrid Petrol 1.5 l Hybrid 130 e-CVT 2WD
Fuel Consumption (Applicable Legislation)				
Combined speeds (l/100 km)	4.5-5.2	4.8-5.1	4.8-5.2	4.5-5.0
Low speed (l/100 km)	3.2-3.8	3.8-4.2	3.8-4.2	3.4-3.8
Medium speed (l/100 km)	3.4-3.9	3.6-4.0	3.6-4.0	3.4-3.8
High speed (l/100 km)	3.9-4.5	4.1-4.4	4.2-4.5	3.9-4.4
Extra high speed (l/100 km)	6.1-7.0	6.3-6.7	6.4-6.9	6.0-6.6
Carbon Dioxide, CO <sub>2</sub> (Applicable Legislation)				
Combined speeds (g/km)	101-117	108-116	108-118	101-113
Low speed (g/km)	72-86	86-95	85-94	77-87
Medium speed (g/km)	76-88	83-90	82-91	76-85
High speed (g/km)	88-102	93-100	94-103	88-99
Extra high speed (g/km)	139-159	144-152	144-155	136-150
Exhaust Emissions (Regulation EC 715/2007 as Amended by EC 2023/443 EA)				
Euro class	EURO 6 EA	EURO 6 EA	EURO 6 EA	EURO 6 EA
Carbon Monoxide, CO (mg/km)	157.1	97.5	81.6	83.8
Nitrogen Oxides, NOx (mg/km)	7.0	3.3	6.1	6.2
Hydrocarbons, NMHC (mg/km)	13.5	8.3	8.2	8.9
Hydrocarbons, THC (mg/km)	16.1	9.8	9.9	10.6
Sound level drive by (dB(A))	68.0	68.0	69.0	70.0

The fuel consumption and CO<sub>2</sub> values are measured in a controlled environment on a representative production model, in accordance with the requirements of the WLTP European regulation EC 2017/1151 and its applicable amendments. For each individual vehicle configuration, the final fuel consumption and CO<sub>2</sub> values may be calculated based on the ordered optional equipment. The fuel consumption and CO<sub>2</sub> values of your vehicle may vary from those measured or calculated values, as driving behaviour as well as other factors (such as road conditions, traffic, vehicle condition, tyre pressure, load, number of passengers, etc.) have an influence on a car’s fuel consumption and CO<sub>2</sub> emissions.

ENGINE	Hybrid Petrol 1.5 l Hybrid 115 e-CVT	Hybrid Petrol 1.5 l Hybrid 130 e-CVT
Engine Code	M15A-FXE	M15A-FXE
Number of cylinders	3 cylinders, in line	3 cylinders, in line
Fuel injection system	Intake port (multi-point)	Intake port (multi-point)
Displacement (cc)	1490	1490
Bore x stroke (mm x mm)	80.5 x 97.6	80.5 x 97.6
Compression ratio	14.0:1	14.0:1
Max Output	116	130
Maximum output (DIN hp)	92	92
Maximum output (kW@rpm)	68/5500	68/5500
Maximum torque (Nm@rpm)	120/3600-4800	120/3600-4800
Total Hybrid System Output (kW)	85	96
Total Hybrid System Output (DIN hp)	116	130
Electric Front Motor: Type	Permanent magnet synchronous motor	Permanent magnet synchronous motor
Electric Front Motor: Maximum output (kW@rpm)	59	62
Electric Front Motor: Maximum torque (Nm@rpm)	141	185
Hybrid vehicle battery: Type	Lithium-ion	Lithium-ion
Hybrid vehicle battery: Capacity Ah (hr)	4.3	4.3

PERFORMANCE		
Maximum speed (km/h)	170	170
Acceleration 0-100 km/h (secs)	11.2/11.8	10.7/11.3
Drag coefficient	0.35	0.35/0.36



SPECIFICATIONS

SUSPENSION		
Hybrid Petrol 1.5 l Hybrid 115 e-CVT		
Front	MacPherson strut	MacPherson strut
Rear	Double wishbone/Torsion beam	Double wishbone/Torsion beam

BRAKES		
Hybrid Petrol 1.5 l Hybrid 130 e-CVT		
Front	Ventilated disc 1-cylinder	Ventilated disc 1-cylinder
Rear	Solid disc 1-cylinder	Solid disc 1-cylinder

WEIGHTS & TOWING CAPACITY		
Total Gross Vehicle Mass (kg)	2440/2525	2440/2525
Kerb weight (kg)	1190-1330	1200-1360
Mass in running order	1265-1355	1275-1380
Towing capacity without brakes (kg)	550	550
Towing capacity with brakes (kg)	750	750

EXTERIOR DIMENSIONS		5-door
Length (mm)	4172/4192/4197	
Width (mm)	1765	
Height (mm)	1585/1595	
Front tread (mm)	1520/1530	
Rear tread (mm)	1519/1529/1531	
Overhang front (mm)	845/851	
Overhang rear (mm)	767/786/787	
Wheelbase (mm)	2560	

INTERIOR DIMENSIONS		5-door
Number of seats	5	
Interior width (mm)	1430	
Interior height (mm)	1205	

LOAD CAPACITY		5-door
Luggage Capacity (5 Seats Up; Up To Belt Line) (litres)	320/397	
Luggage Capacity (2 Seats Up; Up To Roof) (litres)	1097	
Luggage Compartment Length (5 Seats Up) (mm)	785	
Luggage Compartment Maximum Width (mm)	1402	
Luggage Compartment Height (Up To Roof) (mm)	852	

STEERING		5-door
Turning Circle Tyre (m)	10.6	







# TOYOTA 2050 ENVIRONMENTAL CHALLENGE & LIFECYCLE POLICY

At Toyota, we want to go beyond zero environmental impact and leave the world in a better place than we found it. To make that happen, we have set ourselves six challenges to complete by 2050. Each one presents its own difficulties, but we are committed to generating a positive and sustainable impact on society and the natural world as a whole.

For more information regarding Toyota Environmental Challenge please visit: [www.toyota-europe.com/world-of-toyota/feel/environmental-sustainability](http://www.toyota-europe.com/world-of-toyota/feel/environmental-sustainability) or contact your local Toyota retailer.



## CHALLENGE 1 NEW VEHICLE – ZERO CO<sub>2</sub> EMISSIONS

By 2050, we want to reduce the CO<sub>2</sub> emissions from our vehicles by 90% compared to our 2010 levels. To achieve this, we will promote the development of new vehicles with low or zero carbon emissions, and do everything we can to increase the uptake of these vehicles.



## CHALLENGE 3 PLANT – ZERO CO<sub>2</sub> EMISSIONS

To reduce carbon emissions at our manufacturing plants, we are focusing on improving the technologies we use and switching to alternative power sources. We are committed to making our facilities more energy-efficient and adopting renewable energy sources such as solar and wind, as well as low-carbon power such as hydrogen energy.



## CHALLENGE 5 ESTABLISHING A RECYCLING-BASED SOCIETY AND SYSTEMS

We've been working on the challenge of resource recycling for 40 years, with the result that 95% of every Toyota Yaris Cross is now reusable and recoverable. In addition, we offer new and innovative ways of returning your vehicle when it eventually reaches 'the end of the road'.



## CHALLENGE 2 LIFE CYCLE – ZERO CO<sub>2</sub> EMISSIONS

We are working to create more environmentally friendly designs – and then analysing and refining them to ensure the lowest possible environmental impact throughout the vehicle's entire life cycle\*.



## CHALLENGE 4 MINIMISING AND OPTIMISING WATER USAGE

To minimise water usage, we have started to collect rainwater at our manufacturing plants. We have also developed purification methods so that the water we do use can either be used again or returned safely into the local supply.



## CHALLENGE 6 ESTABLISHING A FUTURE SOCIETY IN HARMONY WITH NATURE

To preserve and enhance our co-existence with the natural world, we are organising reforestation and tree planting, green urban schemes and other environmental initiatives, both at our own sites and in the wider world. Our aim is to establish a society where people and nature coexist in harmony.



\* Toyota's LCA methodology, which is applied to our passenger vehicles, was reviewed and approved by TÜV Rheinland and has been certified to comply with ISO14040/14044 standards.

# YOUR COMPLETE PEACE OF MIND WITH TOYOTA

**COMPREHENSIVE WARRANTY**  
Every new Toyota comes with a 3-year/100,000 km vehicle warranty<sup>§</sup>, which covers any defect caused by a manufacturing fault\*\*.

**ADDED SECURITY**  
Toyota's comprehensive security system withstands the insurance industry's rigorous 5-minute attack test.

**TOYOTA EUROCARE**  
Enjoy peace of mind driving with complimentary Toyota Eurocare roadside assistance in 40 European countries for 3 years<sup>§§</sup>.

**GENUINE ACCESSORIES**  
Toyota accessories are designed and manufactured with the same care, quality and attention to detail as Toyota vehicles. All accessories are covered by a 3-year warranty when purchased together with the vehicle<sup>§</sup>.

**HYBRID SERVICE PROGRAMME**  
Hybrid Battery Extra Care cover<sup>§</sup> on an annual/15,000 km basis (whichever comes sooner) up to the 10th year from vehicle registration date.

**QUALITY SERVICE**  
Your Toyota will need a Health & Safety check at least once every 2 years/30,000 km (whichever comes sooner). An intermediate check is necessary every year or 15,000 km.

**LOW MAINTENANCE COSTS**  
All Toyota vehicles are designed and engineered to minimise your maintenance costs.

**GENUINE PARTS**  
Providing the reassurance of Toyota quality, only genuine and approved components are used on your vehicle.

For more information on peace of mind visit: [www.toyota-europe.com/service-and-accessories](http://www.toyota-europe.com/service-and-accessories)

<sup>§</sup> Check with your retailer for specific Toyota Hybrid Service Programme details. <sup>§§</sup> Check with your retailer for specific warranty details. <sup>\*\*</sup> Transport to the nearest authorised Toyota repairer will also be covered. In addition the 3-year/unlimited mileage paint warranty protects against defects and surface rust caused by a manufacturing fault. Every new Toyota is covered by a 12-year anti-corrosion (not valid for commercial vehicles) warranty against perforation of body panels caused by a manufacturing fault in materials or workmanship. <sup>§§</sup> Belgium 5 years/Portugal and Denmark 1 year.







TOYOTA YARIS CROSS

# EVERY CAN DO COUNTS

[TOYOTA.COM.CY](https://toyota.com.cy)

To the best of our knowledge, all information in this brochure is correct at time of going to print. Details of specifications and equipment provided in this brochure are subject to local conditions and requirements and may, therefore, vary from models available in your area. Please enquire with your local retailer for details on your local specifications and equipment. • Vehicle body colours may differ slightly from the printed photographs in this brochure. • The readability of QR Codes® present in this brochure may differ according to the scanner used. Toyota cannot be held responsible should your device not be able to read any QR Codes® or interactive content markers. • Toyota Motor Europe reserves the right to alter any details of specifications and equipment without prior notice. • © 2025 by Toyota Motor Europe NV/SA ('TME'). • No part of this publication may in any way be reproduced without the prior written approval of Toyota Motor Europe.